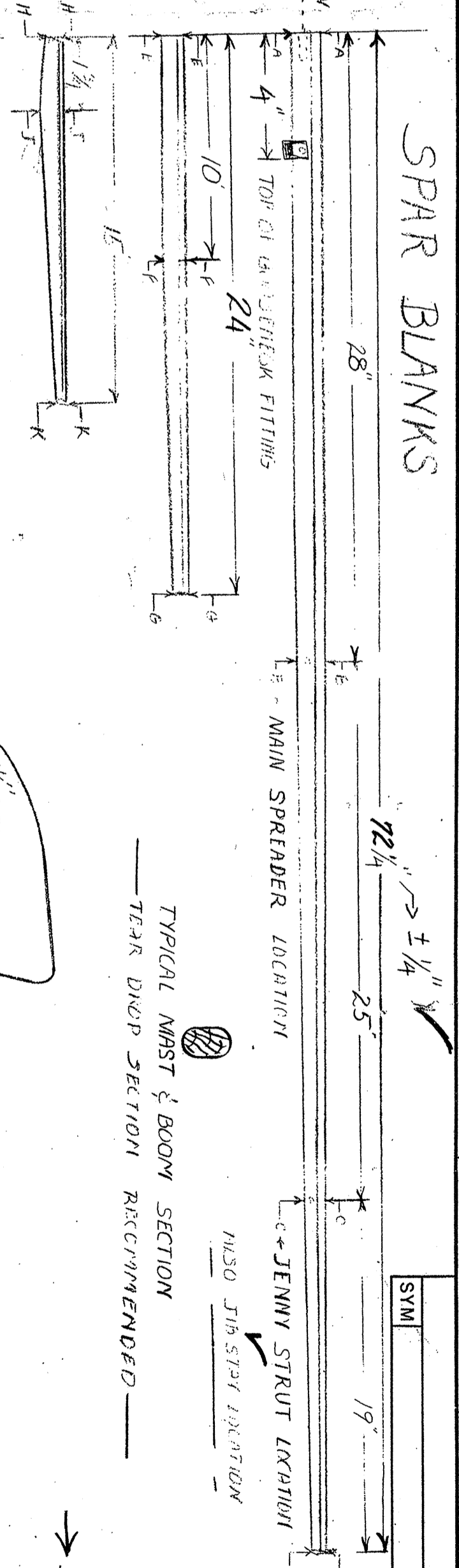


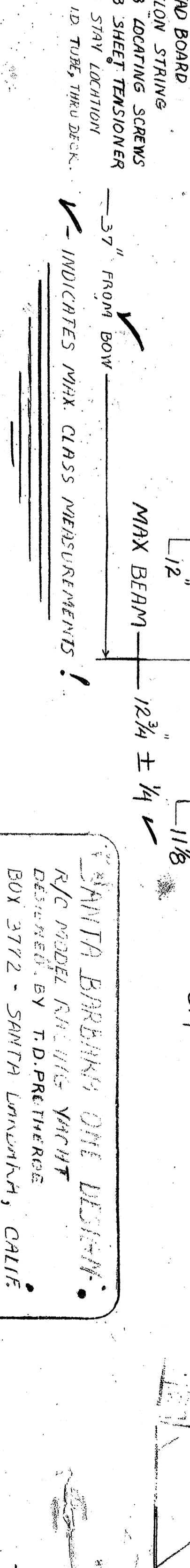
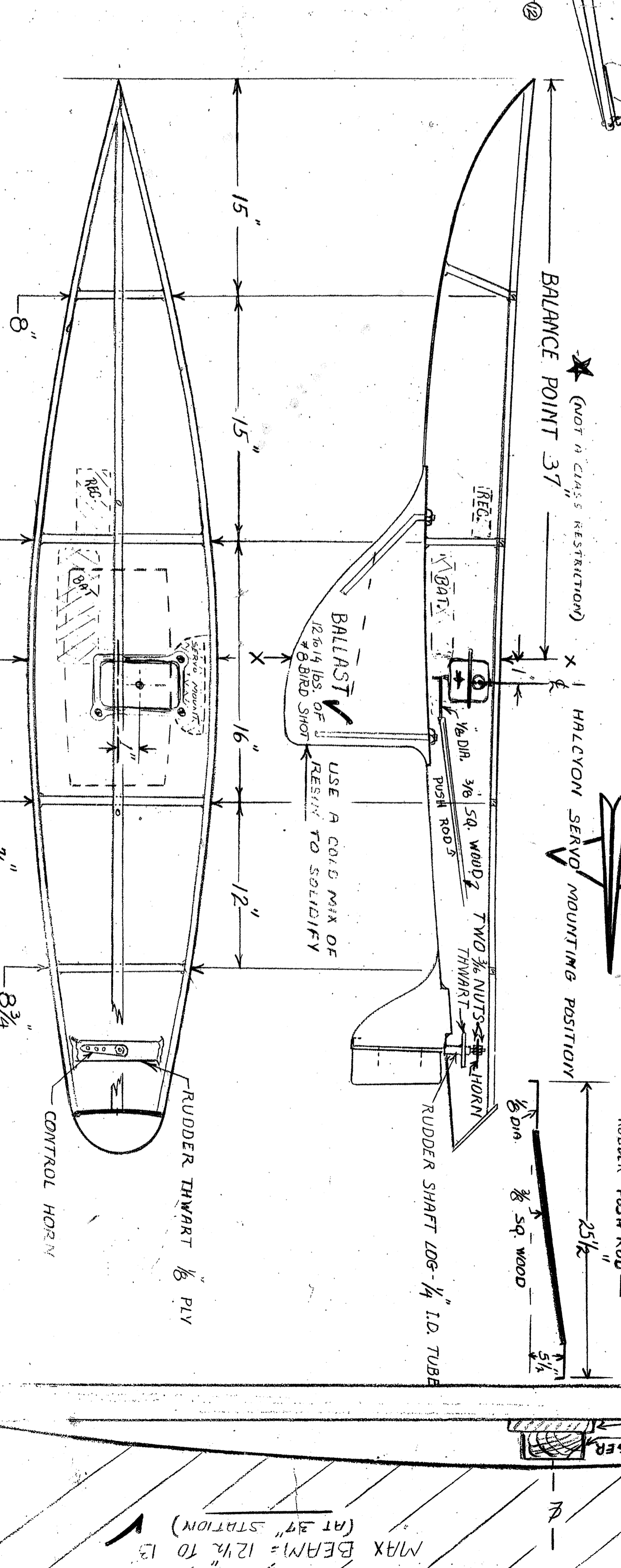
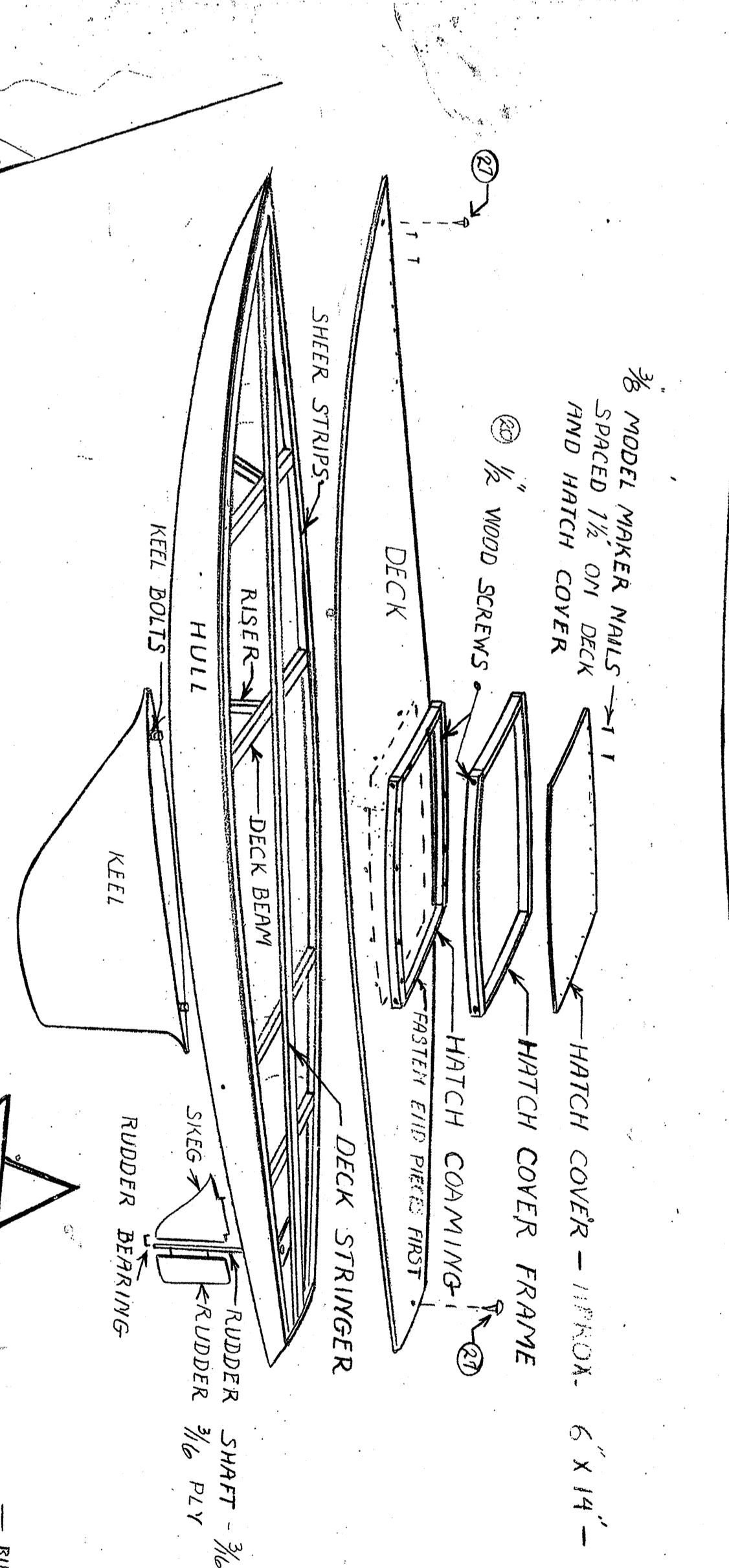
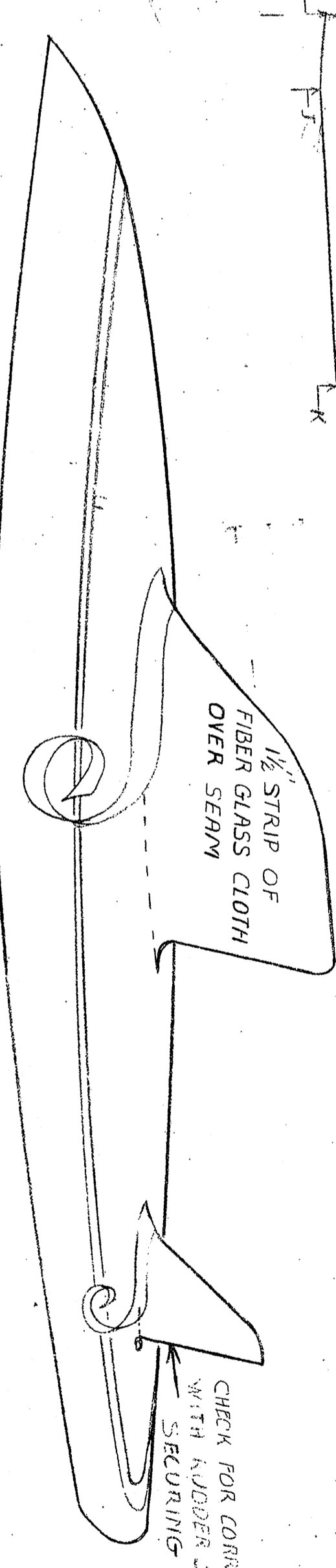
APPROVED IS SUBJECT TO PRIOR WRITTEN CONSENT OF THE AUTHOR

REVISIONS	DATE	APPROVED
1		

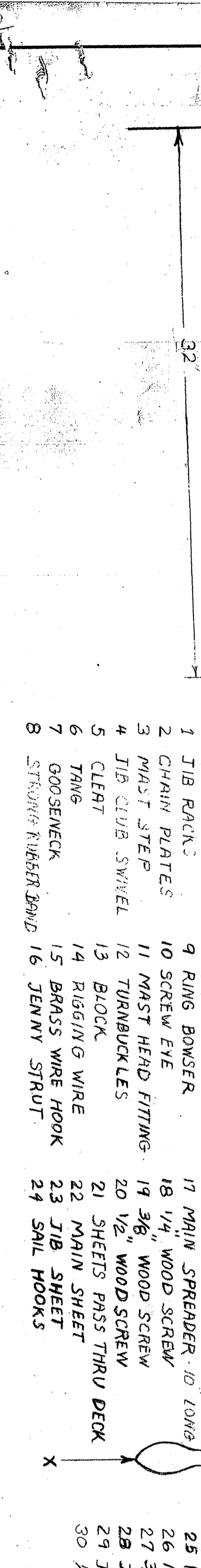
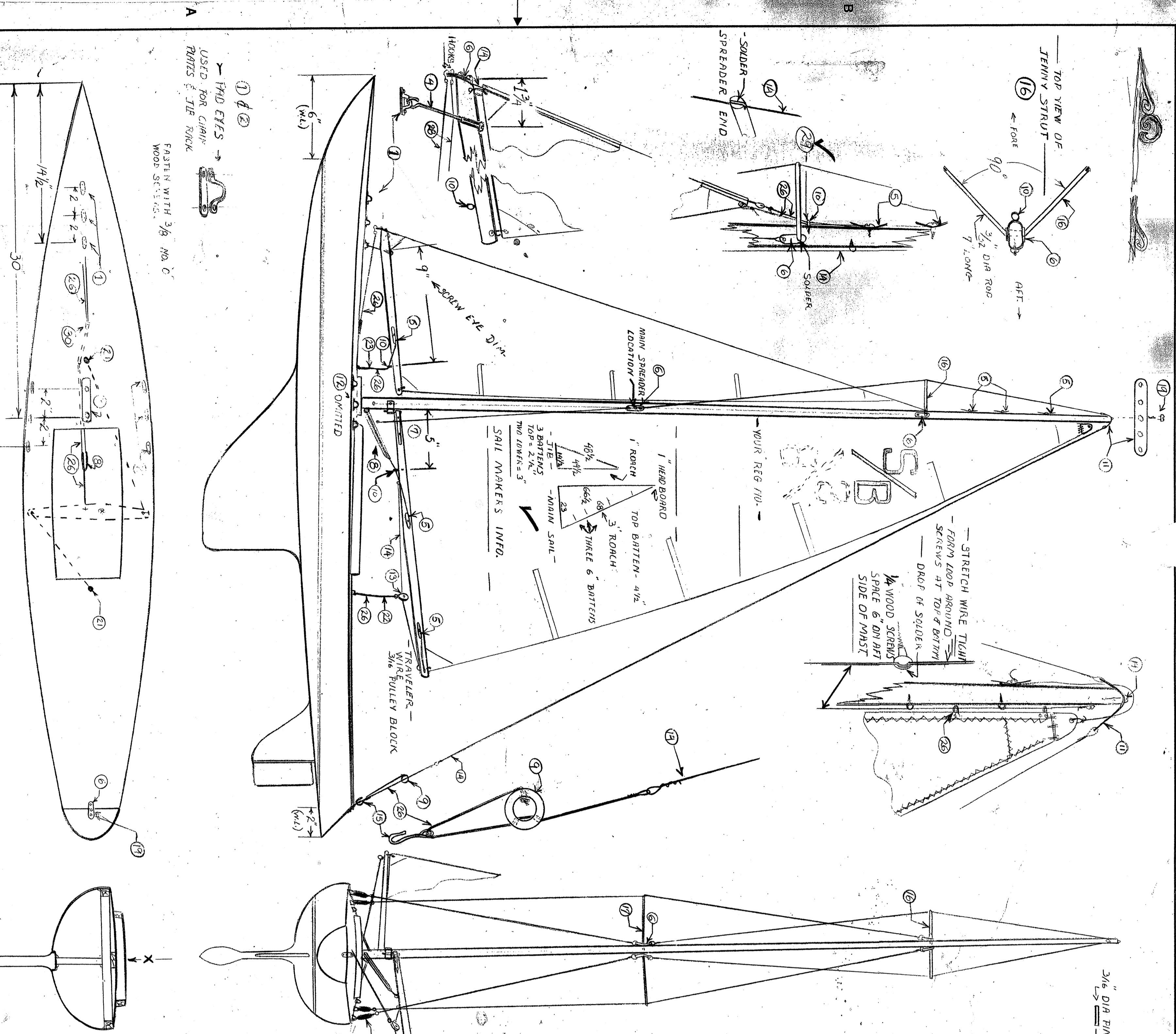


SEC.	MAST	MAIN BOOM
H-A	1/2 x 3/8	E-E 3/8 x 1/2
B-B	1/2 x 3/4	F-F 3/8 x 3/8
C-C	3/8 x 3/8	G-G 3/8 x 3/8
D-D	3/8 x 1/2	

→ SEC. DIM. NOT CRITICAL → JIB CLUB
 H-H 3/8 x 1/2
 J-J 3/8 x 3/8
 K-K 3/8 x 1/2



SANTA BARBARA ONE DESIGN
 R/C MODEL RACING YACHT
 DESIGNED BY T.D. PRATHER
 BOX 3772 - SANTA LINDAVICH, CALIF.
 PHONE: 805-766-7975



- 1 JIB RACK
- 2 CHAIN PLATES
- 3 MAIST STEP
- 4 JIB CLUB SWIVEL
- 5 CLEAR
- 6 TONG
- 7 GOOSENECK
- 8 STAYON RUBBER BAND
- 9 RING BOWSER
- 10 SCREW EYE
- 11 MAIN SPREADER 10\"/>
- 12 TURNBUCKLES
- 13 BLOCK
- 14 RIGGING WIRE
- 15 BRASS WIRE HOOK
- 16 JENNY STRUT
- 17 MAIN SPREADER 10\"/>
- 18 1/4\"/>
- 19 3/8\"/>
- 20 1/2\"/>
- 21 SHEETS PASS THRU DECK
- 22 MAIN SHEET
- 23 JIB SHEET
- 24 SAIL HOOKS
- 25 HEAD BOARD
- 26 NYLON STRAP
- 27 3/8\"/>
- 28 JIB SHEET TENSIONER
- 29 JIB STAY LOCATION
- 30 3/8\"/>

① & ②
 HAND EYES
 USED FOR CHAIN
 POINTS & JIB TRACK
 FASTEN WITH 3/8\"/>